

Data sheet LX 836

Roof Drainage

High performance siphonic drainage system Serie 49

Main Drainage

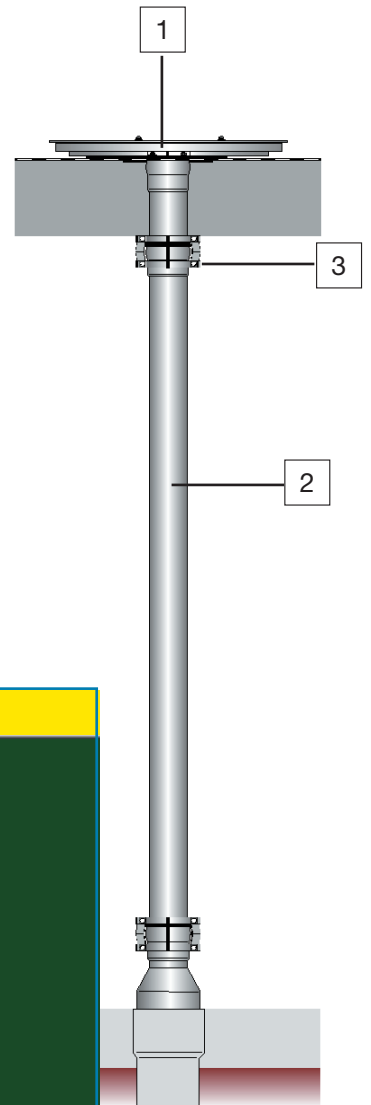
Siphonic flow

Silent Power

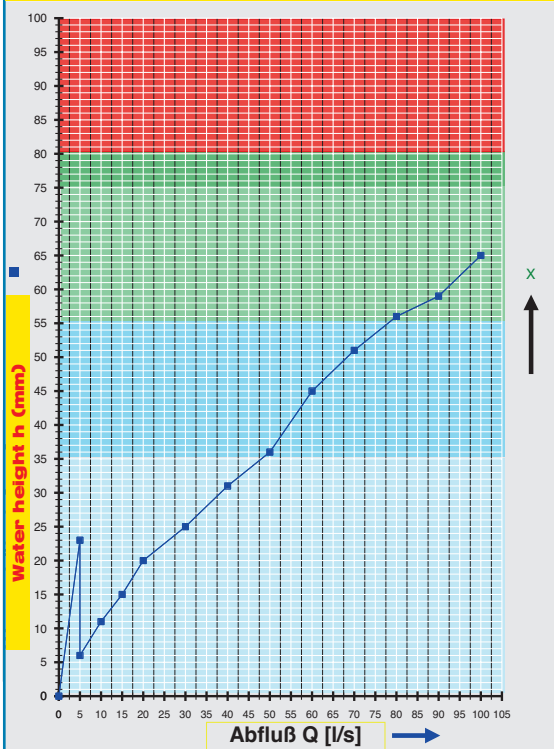
Discharge rate: 65,0 l/sec	Discharge rate: 100,0 l/sec
Water height: 55 mm	Water height: 60 mm
Diameter: DN 150	Diameter: DN 150
LX-Number: LX 836	LX-Number: LX 836
Weir height: 0 mm	Weir height: 0 mm
Drain: not ventilated	Drain: not ventilated
Downpipe: not ventilated	Downpipe: not ventilated
Downpipe height: 4,2 m	Downpipe height: 4,2 m
Drainage: in sewer	Drainage: in sewer
Flange form: Clamping flange	Flange form: Clamping flange

LX 836 System components

- 1 LORO-X High performance drain
- 2 LORO-X rain water pipe
- 3 LORO-X anchor hoops

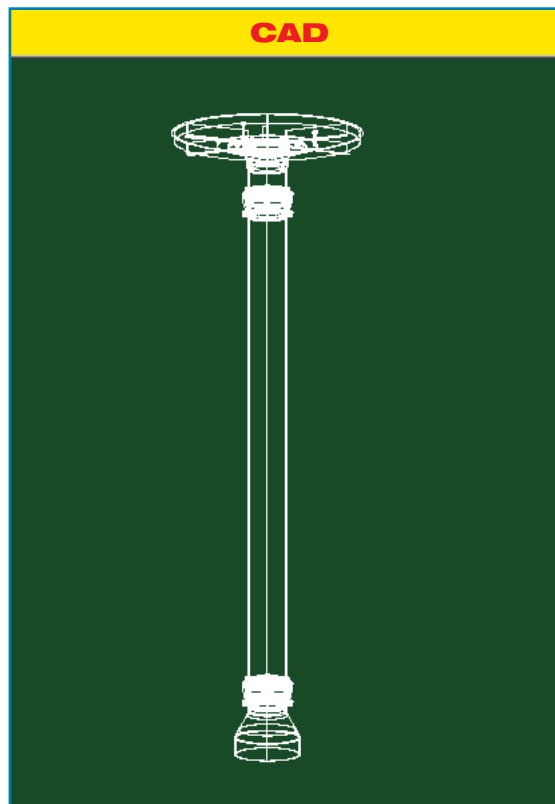


hQ - Head-Discharge curve



Systempower

CAD

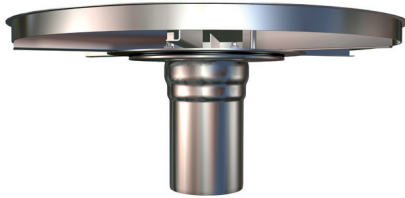


Systemshape

Water height	mm	5	10	15	20	25	30	35	40	45	50	55	60	65	70	75
Discharge	l/sec					30	38	48	54	60	68	78	92	100		

LORO-high performance siphonic drainage, DN 150

system component
LORO-high performance siphonic drain
 with clamping flange
 drain: article No. 21114.150X



LX836-2X



single-part
Pipe with one socket, for
LORO-high performance siphonic
drainage systems

DN 150, made of hot-galvanised steel,
 article No. 01011.150X



single-part
Anchor hoops, for
LORO-high performance siphonic
drainage systems

DN 150, made of hot-galvanised steel,
 article No. 00808.150X



single-part
Sealing element, for
LORO-high performance siphonic
drainage systems

DN 150, article No. 00911.150X

